

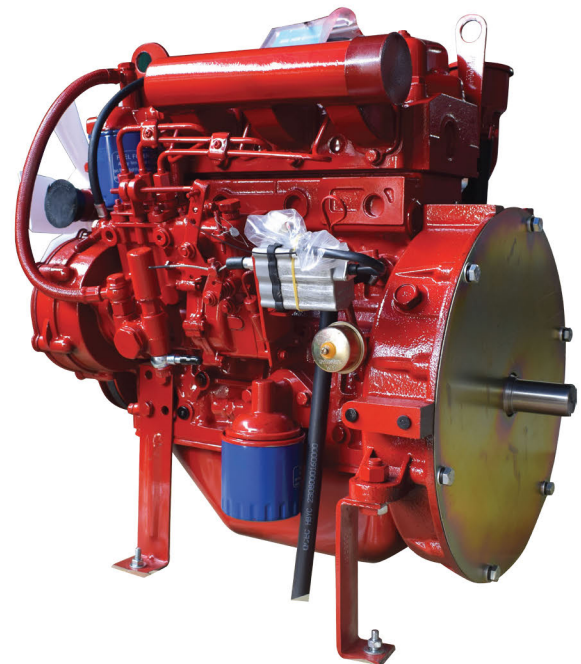
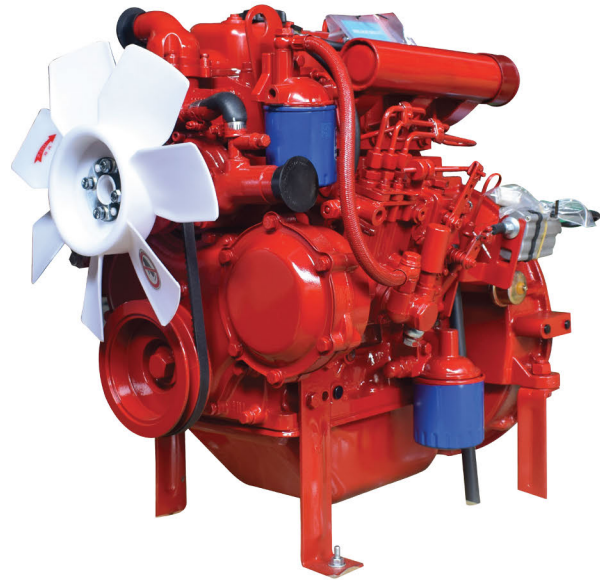


ANHUI QUANCHAI ENGINE CO., LTD

Model Quanchai QC380Q

Displacement (cc)	1357	
Bore x Stroke (mm)	80x90	
Rated Power (Kw/Hp/rpm)	21/28/2900	
Maximum Torque (kg.m)	7.26	
Dimensions (mm)	Length	623
	Width	430
	Height	1043
Weight in dry (kg)	230	
Engine type (stroke)	4	
No. of cylinder	3	
Cylinder arrangement	In-line	
Firing Order	1-3-2	

Note: The engine is new 100%, manufactured by Quanchai Corporation, China, have CO, CQ.



Authorised Dealer:
SONG HAN TRADING IMPORT EXPORT CO., LTD
40 Binh Phu St., Tam Phu Ward, Thu Duc Dist, HCMC, Vietnam
Tel: +84-028-3729-6513
Email: info@songhan-motor.com.vn
Website: www.songhan-motor.com.vn