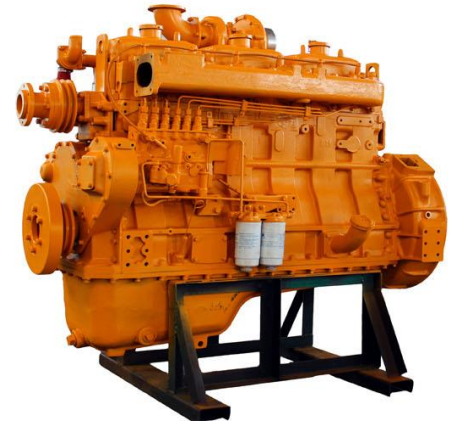


6MK**Diesel Engines for Generator Set**

- **Advanced Technology & Design** Origin from Germany FEV, Yuchai companies, with more compact structures, engine overhaul can meet more than 12000 hours;
- **Common Parts Supply System** Parts will share Yuchai engines parts supply system, cheap and easy to get in current market;
- **Environmentally Operation** Fuel consumption will lower 205g/kw.h, with lesser vibration, noise; best choice for samll machines
- **Application** Diesel genset power range from 210kw to 310kw.

Model	6MK410L
Type	Vertical, in-line, water-cooled, 4-stroke
Intake Way	Turbocharged Inter-cooled
No Cylinders, Bore x Stroke (mm)	6-135x165
Displacement (L)	14.2
Compression ratio	17.5:1
Rated power/speed (kW/r/min)	275/1500
Standby power/speed (kW/r/min)	303/1500
Min fuel consumption g/(kW·h)	≤195
Oil capability(L)	28~30
Oil Consumption g/(kW·h)	≤1.2
Starting Type	Electric Sart
Noise limit dB (A)	≤103
Regulator Approach	Electric
Governing Rate	≤1%
Flywheel house/flywheel	1#14
Suitable height above sea level	≤2500
Dimmension(mm)	1680x920x1550
Net weight(kg)	1200

Liuzhou Long Dao Industrial & Trading Co.,Ltd

Mobile: +86 130 8772 3334 Tel:/Fax: +86 (0)772-2875155

Web: <http://longdaodieselengine.com>

Address:No.3-9-7, Sunshine 100, Guizhong Avenue South No.2, Liuzhou, Guangxi, China.