

WEIFANG



TECHNICAL DATA

MODEL: KP-WF1250

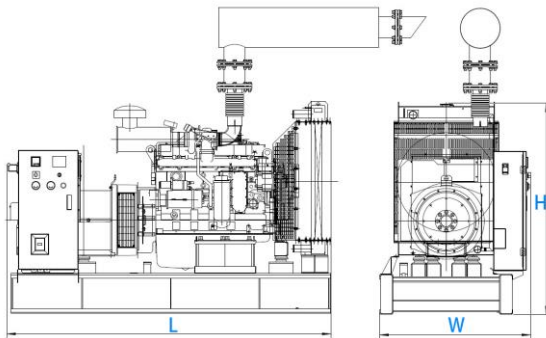
DIESEL GENERATING SET

KPS POWER VIETNAM

50HZ

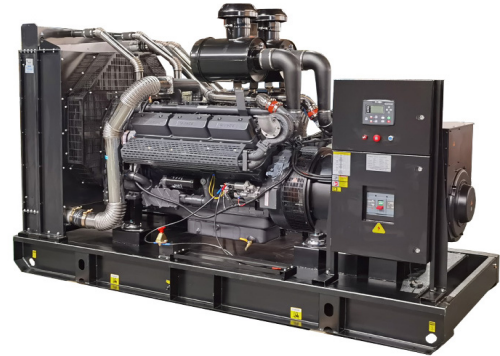
Features

- Compact structure high-strength chassis
- Easy operation and maintenance, Low cost
- Good performance damping system
- Compliance with international electrical safety standards of electrical system
- High-performance maintenance-free batteries with isolation switch
- 50°C radiator
- Top lifting, Forklift bottom hole design, easy to transport
- Industrial type muffler
- Noise reduction structure, Low overall noise, Engine mount rubber
- Convenient power output interface and ATS Interface
- IP56 (control system)
- Working conditions: suitable for tropical environments up to 40°C
- Noise Level Soundproof Enclosure (Acoustic Room): 90dB(A) @7m
- Accessories Included: Air Filter, Oil Filter, Fuel Filter, Exhaust Silencer, Battery, Battery Charger, Protective MCCB, Operation & Maintenance Manual.



| Dimension and Weight | |
|----------------------|-----------|
| Generating set model | KP-WF1250 |
| Length(L) (mm) | 5300 |
| Width(W) (mm) | 2200 |
| Height(H) (mm) | 2600 |
| Dry weight (k g) | 7500 |

Reference images, the actual shall prevail



| Genset Technical Data | |
|--------------------------------|-------------------------|
| Output frequency, phase, wires | 50 HZ, 3 phase, 4 wires |
| Rated speed | 1500 rpm |
| Prime power | 1250KVA/1000KW |
| Standby power | 1375KVA/1100KW |
| Rated voltage | 400/230 VAC |
| Power factor (cosφ) | 0.8 |
| Engine model | 16VWF1225 |
| Alternator model | KP634G |
| Fuel consumption 50% load | 132 Litres/h |
| Fuel consumption 75% load | 191 Litres/h |
| Fuel consumption 100% load | 254.9 Litres/h |

Prime Power

This rating is for the supply of continuous electrical power (at variable load). There is no limit on the annual hours of operation and 10% overload power can be supplied for 1 hour in 12.

Standby power

This rating is for the supply of continuous electrical power (at variable load) in the event of a utility power failure. No overload is permitted.

Manufacturing generator standards

All index of this product passed the Inspection and Testing according to GB/T2820, ISO8528, CE, GS, SONCAP, EPA and CARB standard.

Factory Certificates

BS EN ISO 9001:2015 and BS EN ISO 14001:2015

Engine Specifications

| | |
|---------------------------------------|--|
| Engine model | 16VWF-1225 |
| Engine manufacturer | WEIFANG |
| Number of cylinders, cycle, fuel type | 16/ V-Type, 4 strokes, diesel |
| Fuel consumption of 50% load | 132 Litres/h |
| Fuel consumption of 100% load | 254.9 Litres/h |
| Aspiration | Turbocharged & Intercooled (air to air) |
| Bore x Stroke (mm x mm) | 135 x 145 |
| Displacement (Liter) | 33.2 |
| Compression Ratio | 15.5:1 |
| Prime power/speed (kW/RPM) | 1110 KW / 1500rpm |
| Standby power/speed (kW/RPM) | 1225 KW / 1500rpm |
| Speed governor | Electric (Common Rail) |
| Cooling system | Forced Water Cooling Cycle with radiator and cooling fan |
| Steady speed droop (%) | ≤1% |
| Total lubrication system capacity (L) | 50L |
| Coolant capacity (L) | 32L (Engine Only) |
| Fuel consumption at 100% load (g/kWh) | 193.3g/kwh |
| Starter motor | DC24V |
| Alternator | DC24V |

Alternator Specifications

| | |
|-----------------------------------|--|
| Rated frequency | 50 Hz |
| Rated speed/max speed | 1500/2250 rpm |
| Alternator model | KP634G (KPS brand) |
| Rated output prime power | 1250KVA |
| Efficiency (%) | 94.9% |
| Phase/wire | 3/4 |
| Rated voltage | 230/400V (VAC) |
| Exciter type | Self excited, Brushless, Automatic Voltage Regulator (AVR), Air-cooled |
| Power factor | 0.8 |
| Frequency regulation | ±0.5% |
| Voltage regulation | ±1% (AVR) |
| Insulation class | H |
| Protection grade | IP23 |
| Telephone interference (THF, TIF) | <2%, <50 |
| Overload Capacity | 10% of rated current, 1 hour in every 12 hours of continuous operation |
| Sustained short circuit | 5,400 Amps at 50Hz |
| Cooling air | 2.18 m ³ /sec |
| Bearing type | 1 Bearing |

Manufacture standard

All index of this product passed the Inspection and Testing according to BS EN 60034, BS5000, VDE 0530, NEMA MG132, IEC34, CSA C22.1100, AS1359, GB/T2820, ISO8528, CE, ISO9000, GS, SONCAP, EPA and CARB

Control System

SMARTGEN (Standard)

All KPS Gensets have a control cabinet (the Smartgen control module HGM6120N as standard) mounted on isolated support. Digital control module with LCD display for complete generator control and utility mains monitoring.

Displayed Measurement Functions:

- Generator & Utility Line Voltage (L-L, L-N)
- Generator Frequency
- Generator Three-Phase Current (L1, L2, L3)
- Engine Speed (RPM)
- Engine Oil Pressure
- Engine Coolant Temperature
- Generator Power (kVA, kW, kVA_r, kWh, kVA_h, kVA_rh)
- Battery Voltage
- Engine Running
- Hours
- Power Factor (PF)
- Fuel Level

Warning Functions (Non-Shutdown):

- Battery Overvoltage / Undervoltage
- Phase Imbalance
- Battery Charging Failure
- Low Fuel Level
- Engine Overspeed / Underspeed

Shutdown Protection Functions:

- Low Engine Oil Pressure
- High Engine Coolant Temperature
- Generator Overvoltage / Undervoltage
- Generator Overfrequency / Underfrequency
- Overload / Short Circuit
- Fail to Start (Exceeded Maximum Start Attempts)

Additional Features and Display Functions:

- Supports remote communication and monitoring via RS232/RS485 and USB interfaces
- Displays manufacturer logo, alarm list, software version, event log, and generator fault diagnostics



Optional

Engine

- Water Jacket Preheater
- Fuel-water separator
- Oil pump
- Oil preheater
- Battery preheater

Alternator

- PMG excitation
- Space heater
- Winding Temperature Measuring

Generator Set

- Tools with the machine
- Coolant (-30°C)

Control System

- AMF function
- ATS control cabinet
- Double-frequency and double voltage
- Single phase
- ABB MCCB

Fuel System

- 12 / 24 hour base tank (single wall)
- Dual wall base fuel tank
- Outside fuel tank
- Automatic fuel feeding
- Fuel level indicate

Canopy

- Hired type
- Economy Oil heater
- Trailer



Contact Us

KPS POWER VIETNAM

HCM Branch: 40 Binh Phu St., Tam Binh Ward, HCM City, Vietnam

Tel: 028 – 6683 7858 Hotline: 0945 424 114

Hanoi Branch: 30 Dai Tu St., Dinh Cong Ward, Ha Noi City, Vietnam

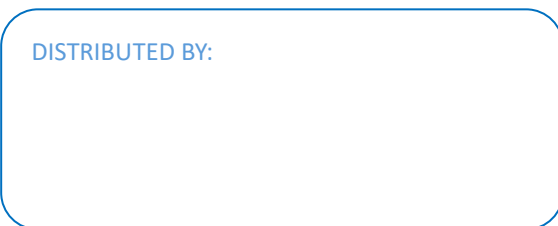
Tel: 024 – 6253 7450 Hotline: 0947 334 114

Email: info@kpspower.vn

Website: www.kpspower.com.vn

KPS reserves the right to make changes in model, technical specification, color, configuration and accessories without prior notice. Please contact the salesman before ordering.

DISTRIBUTED BY:



©2016 by KPS, All rights reserved.

